

VICTORIAN BATHROOMS

— EST. 1989 —

FURNITURE

A way of effortlessly adding elegant practicality into the bathroom is through vanity units; a combination of basins with furniture for additional storage space.



Prices quoted ex-works Cape Town, inclusive of VAT
Prices are subject to change without prior notice
Please verify current prices & stock availability before ordering
01 February 2026



Belle Basin & Vanity

The Belle basin and vanity combination is a truly exquisite addition to any bathroom or powder room. Crafted with finesse, this vanity boasts a graceful silhouette that catches the eye. Its curves, contours and intricate detail exudes a timeless charm. The vanity's design feature a luxurious integrated basin, countertop and splashback with ornate carvings, delicate and sleek lines, showcasing exceptional craftsmanship. The Belle vanity offers carefully designed cabinetry. The storage compartment is not only functional but also artistically crafted. Adorned with a handcrafted brass handle which is available in all our special finishes to match your chosen basin mixer.



Belle basin & vanity

Available with 1, 2 or 3 tap holes.

The white basin and backsplash is made from a solid surface material blended with resin & mineral fillers.

This vanity is wall hung and made from MDF and sprayed in a satin white colour.

Centred drawer with a brass handle that can be finished in chrome or any of our 7 bespoke finishes at no additional cost.

Solid surface clicker waste (unslotted) supplied with vanity. Space saving water trap sold separately.

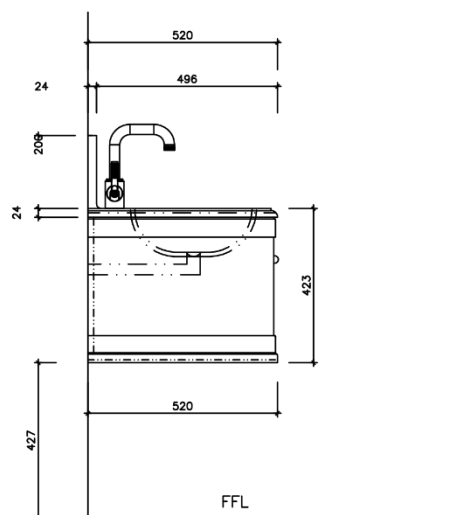
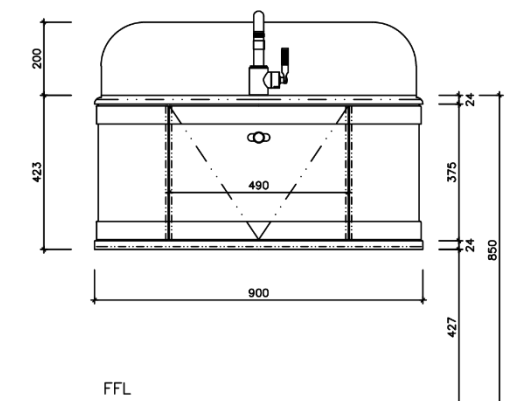
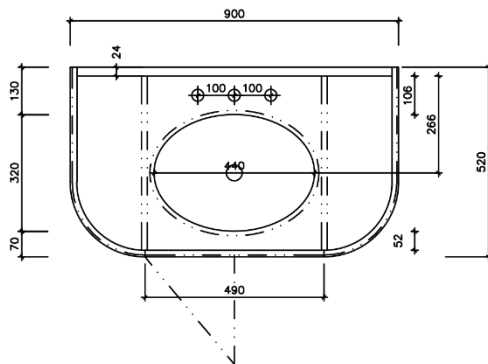
8 – 10 Week lead time for manufacturing.

Dimensions:

Width: 900mm

Depth: 520mm

Height: 618mm (including backsplash)



Rounded backsplash

Code: 11001200

Price: R46 940

Space-saving trap

Code: 22554340

Price: R275

Total: R47 215

Double Vanity Units

The Double Vanity Units embody modern-day performance within the familiar look and feel of the Classic style, uniting form and function for elegantly refined designs. Offering ample storage and graceful features, these Double Vanity Units provide the best in functionality and aesthetics.



Double basin & vanity unit, with doors

This double vanity has a matt white finish and soft-closing doors with chrome-plated metal handles. Inside of the vanity is an adjustable glass shelf. The worktop is made of a Minerva Carrara White counter with two integrated basin bowls with overflows.

An optional matching backsplash is supplied. Tap holes can be drilled making these basins available with 1, 2 or 3 tap holes.

Dimensions:

Width: 1300mm

Depth: 550mm

Height: 850 – 930mm

Code: 12691300 / 126B1200

Price: R83 000



Double basin & vanity unit, with drawers

This double vanity has a matt white finish and soft-closing drawers with chrome-plated metal handles. Inside of the vanity is an adjustable glass shelf. The worktop is made of a Minerva Carrara White counter with two integrated basin bowls with overflows.

An optional matching backsplash is supplied. Tap holes can be drilled making these basins available with 1, 2 or 3 tap holes.

Dimensions:

Width: 1300mm

Depth: 550mm

Height: 850 – 930mm

Code: 12691310 / 126B1200

Price: R90 000

Curved Vanity Units

Indulgently classic, the Curved Vanity Units are defined by symmetry and soft corners. Their classic appeal maximises comfort with modern-day performance and a look that is true to tradition. High quality paint finishes are achieved with 5 layers of primer coats with UV stabilisation to minimise colour fading from exposure to sunlight followed by a luxurious topcoat. The plinths are made from a high density waterproof material that will not absorb water should the floors get wet.



Curved basin & vanity unit, with doors

This curved vanity has a matt white finish and soft-closing doors with chrome-plated metal handles. Inside of the vanity is an adjustable glass shelf. The worktop is made of a Minerva Carrara White counter with an integrated basin bowl with overflow. An optional matching backsplash is supplied. Tap holes can be drilled making this basin unit available with 1, 2 or 3 tap holes.

Dimensions:

Width: 1340mm

Depth: 550mm

Height: 850 – 930mm

Code: 12694000 / 126B1300

Price: R98 000



Curved basin & vanity unit, with drawers

This curved vanity has a matt white finish and soft-closing drawers with chrome-plated metal handles. Inside of the vanity is an adjustable glass shelf. The worktop is made of a Minerva Carrara White counter with an integrated basin bowl with overflow. An optional matching backsplash is supplied. Tap holes can be drilled making this basin unit available with 1, 2 or 3 tap holes.

Dimensions:

Width: 1340mm

Depth: 550mm

Height: 850 – 930mm

Code: 12694100 / 126B1300

Price: R106 000

Fabrica Basin & Vanity

Make a statement with the Fabrica basin and vanity unit.
A focal point in any bathroom, its sleek lines and finishes ooze luxury and sophistication.



Fabrica basin & vanity

The floor standing Fabrica vanity has a matt Midnight Blue finish with brushed brass handles. It has 3 drawers with soft-close drawer runners. The ceramic basin has an overflow and 1 tap hole.

Dimensions:

Width: 600mm

Depth: 380mm

Height: 830mm

Code: 56726000 / 56719600 / 56705300

Price: R28 000

Kingsbury Basin & Vanity

Kingsbury takes the best of traditional style and marries it with contemporary cool, for a classic look that will stand the test of time. Reminiscent of grandiose old-English estates, Kingsbury conjures a sense of vintage-elegance, complemented by unmistakeably modern luxuries, such as soft-close doors.



Kingsbury basin & vanity

The floor standing Kingsbury is in a Classic White finish with chrome knob handles. It has an inner shelf and soft-closing doors for gentle closure. Fitted with a Quartz countertop and backsplash with an underslung basin. The basin and countertop are pre-bonded, keeping installation simple. The basin has an overflow and 1 tap hole.

Dimensions:

Width: 600mm

Depth: 400mm

Height: 850mm (excl. backsplash)

Code: 56701561 / 56701560

Price: R22 600

Chalfont Basin & Vanity Units

The Chalfont units are a seamless blend of classic and contemporary styles, uniting extraordinary eras of design to instil newfound comfort and creating design freedom with a look that lasts.

High quality paint finishes are achieved by 3 layers of primer coats with UV stabilisation to minimise colour fading from exposure to sunlight followed by 2 layers of topcoat for a glorious depth of colour.



Chalfont basin & vanity, 550mm

This Chalfont 550mm vanity has a blue finish with polished brass legs and drawer knob.

It has a spacious soft-closing single drawer unit.

The natural stone, roll top basin has an overflow.

Tap holes can be drilled making it available with 1, 2 or 3 tap holes.

Dimensions:

Width: 550mm

Depth: 458mm

Height: 840mm

Code: 12695500 / 126B7000 / 12695501 / 12695502

Price: R36 080



Chalfont basin & vanity, 750mm

This Chalfont 750mm vanity has a matt black finish with black legs and chrome drawer knob.

It has a spacious soft-closing single drawer unit.

The natural stone, roll top basin has an overflow.

Tap holes can be drilled making it available with 1, 2 or 3 tap holes.

Dimensions:

Width: 750mm

Depth: 458mm

Height: 840mm

Code: 12697500 / 126B9000 / 12695501 / 12697501

Price: R36 940



Cape Town Showroom

18 Marine Drive
(Corner of Hermes Street)
Paarden Eiland
Tel 021 418 0855

Johannesburg Showroom

6 Kramer Road
(Corner of Kramer and Desmond Roads)
Kramerville
Tel 011 325 5503

victorianbathrooms.co.za | [@victorianbathrooms](https://www.instagram.com/victorianbathrooms)